



EMS Crossfire

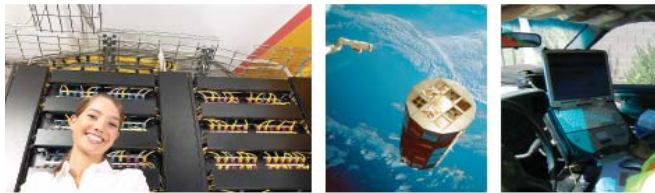
REQUIREMENTS

Crossfire requires both ArcGIS and AutoCAD Map licenses and can quickly and easily be compiled to work with all versions of both products. Feel free to contact EMS with any questions regarding specific versions.

IMPLEMENTATION

Crossfire offers a painless process and will please both ESRI and AutoCAD users. Crossfire is designed specifically to be flexible in order to meet the needs of any organization's precise infrastructure. It adapts to and streamline your workflow and processes rather than reinventing them.

Crossfire from EMS provides seamless integration between ESRI GIS data and Autodesk's AutoCAD software. Now you can directly edit GIS information (SDE or Personal and File Geodatabase) from within AutoCAD. Crossfire is a stand-alone application that acts as a dynamic translator between AutoCAD and GIS data.



We Map Your World.

FEATURES

DIRECT ACCESS

Users will see Crossfire in the form of a tool palette. Crossfire directly reads GIS data to create AutoCAD entities while maintaining all non-graphic attributes in the process. The tool palette also accommodates the placement of GIS graphic elements through the familiar AutoCAD interface; and since Crossfire with AutoCAD uses the native GIS format, your data stays in tact and may still be used concurrently by other GIS applications.

VERSIONING

The Crossfire edit session can attach to a version allowing better management of edits coming from your CAD users.

EDITING

Crossfire is designed with production in mind. Crossfire automates the editing task by providing dropdown boxes for domain-bound fields. Through configuration, Crossfire uses the existing data structure in the Personal Geodatabase minimizing your mobilization time. Any number of fields can be set to default when placed, as well as selecting an existing element to obtain its value.

LEVERAGE YOUR EXISTING RESOURCES

Why change the way you do business to accommodate Enterprise GIS? With Crossfire, you don't have to sacrifice. Users can continue to use AutoCAD as always and create graphics with their existing custom CAD tools. Use Crossfire as the last step in the process to push your edits into GIS.

STAY IN SYNC

With Crossfire's *Zoom Arc to Cad* command, you can always keep the ArcGIS window zoomed to the same location as your CAD display. This allows you to monitor your GIS changes during your edit session.

Autodesk leads the CAD industry with its AutoCAD software, while ESRI's ArcGIS leads the GIS world. Why compromise your production by settling on a single tool? Use the best tool for the job. Crossfire eliminates the need to choose between ESRI GIS, and AutoCAD. It is possible to use the advanced data storage abilities of GIS with the world-wide leader in CAD software.

Crossfire makes AutoCAD a true front-end editor for ESRI GIS



**Engineering
Mapping
Solutions**

GIS Consulting Since 1995

Engineering Mapping Solutions, Inc (EMS) is a professional services firm specializing in GIS consulting, digital engineering solutions, mapping applications, and utility modeling. EMS was founded in 1995, with a combined 30 years experience in computer aided engineering design.

We offer a unique mix of engineering solutions based on data conversion, facility management, custom data capture, conversion applications and custom AutoCAD, Visual Basic, and ArcView application development. EMS also provides custom GIS solutions in ArcInfo, ArcView, and MapInfo using Visual Basic interface solutions.

Staffed with registered civil engineers, EMS provides a thorough solution to the engineering issues that are involved in the creation of quarter section mapping and GIS development. All program development and data capture is done in our Phoenix-based office. We believe that infrastructure mapping from as-built construction plan needs to be done under the supervision of a registered professional engineer. We encourage our clients to visit our facility and to work with us during the conversion for hands-on training and insight to our conversion methods.

Engineering Mapping Solutions, Inc

2330 West Mission Lane, Suite 1
Phoenix, Arizona 85021

TEL (602) 870-7811
FAX (602) 870-7812

Send e-mail inquiries to info@emsol.com
Visit EMS's Web page at www.emsol.com



**Engineering
Mapping
Solutions**

GIS Consulting Since 1995